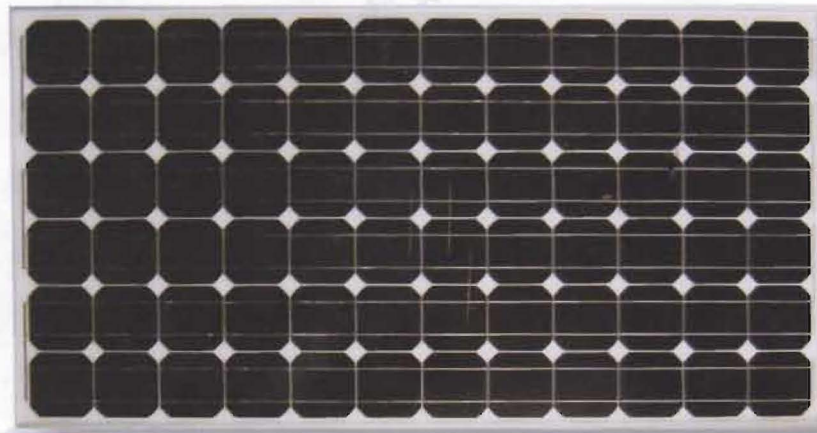


Len 200 Wp - 24 V Monocrystalline PHOTOVOLTAIC MODULES

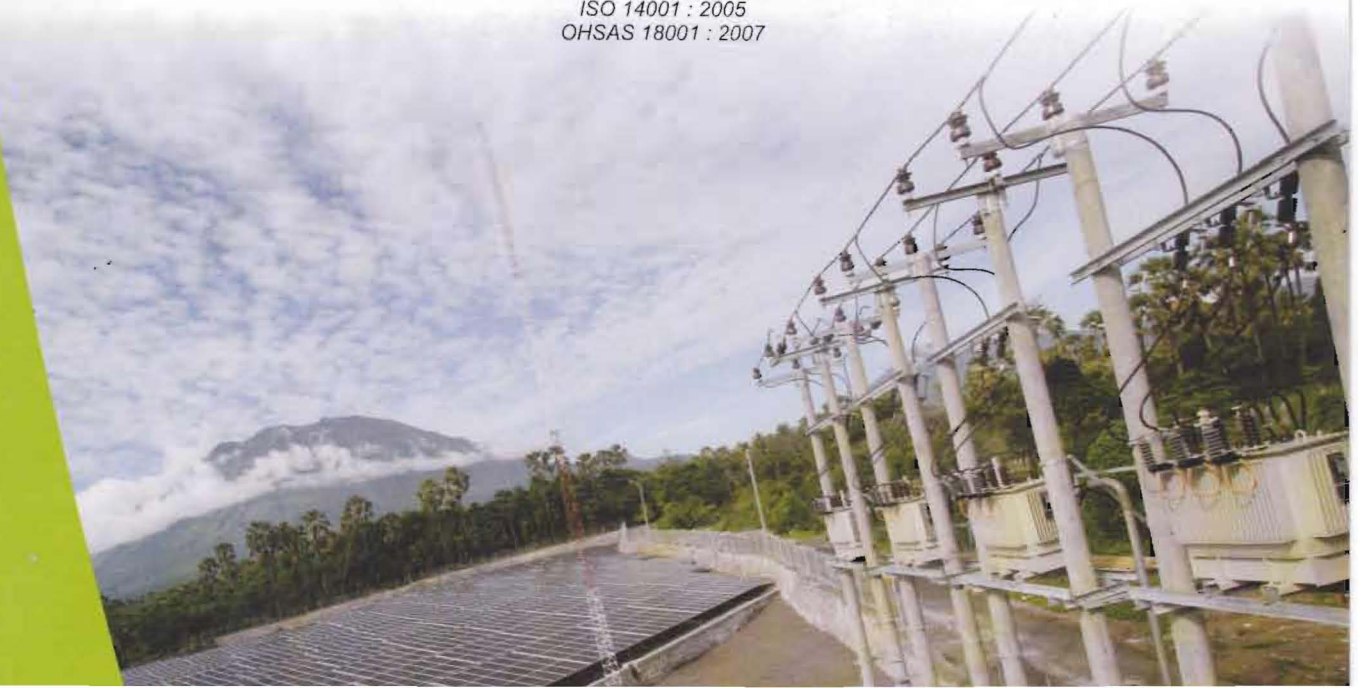
Modul Surya Len 200 Wp - 24 V Monocrystalline ini dibuat dari *solar cell* dengan efisiensi tinggi sehingga mampu menghasilkan daya maksimal hingga lebih dari 200 Wp, untuk kerjanya pada intensitas pencahayaan rendah juga sangat bagus sehingga modul ini masih dapat bekerja pada kondisi berawan dan waktu hujan. Modul ini merupakan pilihan yang tepat digunakan dalam berbagai aplikasi seperti untuk daerah terpencil, peralatan instrumen, sensor keamanan navigasi, lampu lalu lintas, dll.

Solar module Len 200 Wp - 24 V Monocrystalline is made of high conversion efficiency cells, so the maximum power of the module can reach as high as 200 Wp or more. Excellent low light performance guarantees our modules work superiorly even under the weak light conditions such as cloudy, foggy and rainy days. They are ideal choice for any application such as remote habitation, instrumentation system, security sensors navigation, traffic light, etc.

Efficiency
16%



Certified by B2TE BPPT Based on SNI:04-3850.2-1995
Corrosion Test Report Based on SNI:04-6298-2000
ISO 9001 : 2008
ISO 14001 : 2005
OHSAS 18001 : 2007



Electrical Characteristics

STC	Len 200 Wp - 24 V Monocrystalline
Optimum Operating Voltage (Vmp)	37.44 V
Optimum Operating Current (Imp)	5.35 A
Open - Circuit Voltage (Voc)	45.5 V
Short - Circuit Current (Isc)	5.80 A
Maximum Power at STC (Pmax)	200 W
Modul Efficiency	16 %
Operating Module Temperature	-40 °C to +85°C
Maximum System Voltage	1000 V DC
Maximum Series Fuse Rating	20 A
Power Tolerance	+ 0 – 3 %

STC : Irradiance 1000 W/m², module temperature 25 °C, AM=1.5;

Mechanical Characteristics

Solar Cell	Monocrystalline
No. Of Cells	72 (6 X 12)
Dimensions	1580 X 808 X 45 mm
Weight	16 Kg
Junction Box	IP65
Diodes	Schottky by-pass diodes
Output Cables	TUV (2Pfg 1169); PV1-F 1*4mm, Cable with polarized weather proof DC rated ZJRH connectors (MC3 or MC4 type) symmetrical length 1000mm (-) and 1000 mm (+)
Connectors	RADOX® SOLAR integrated twist locking connectors
Construction	Front : High-transmission low-iron, 3,2 mm tempered glass; Back cover : Tedlar / TPE / TPT Encapsulant : EVA; Frame : Anodized aluminum alloy

Temperature Characteristics

Nominal Operating Cell Temperature (NOCT)	50 ± 2 °C
Temperature Coefficient of Power	-0.44 %/°C
Temperature Coefficient of Voc	-0.32 %/°C
Temperature Coefficient of Isc	0.04 %/°C

Current-Voltage & Power-Voltage Curve (Len 200 Wp - 24 V Monocrystalline)

