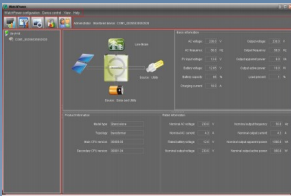
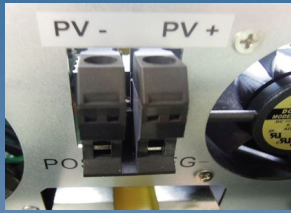


# HS(E)-SERIES OFF GRID INVERTER



- LCD DISPLAY
- HIGH FREQUENCY
- PURE SINE WAVE
- AC CHARGER
- MONITORING
- STACKABLE\*
- PB ACID /LIFEPO4



\* Only on 48v models

HS(E) series                      812                      **NEW** 1212 (1224)                      1624                      2424                      3248                      4048

ELECTRICAL SPECIFICATIONS						
Continuous Output	800W	1200W	1600W	2400W	3200W	4000W
Surge Rating	5 seconds max, 2X					
Input Power Factor	0.8					
Input Voltage Range	90~280VAC (Appliance mode), 170~280VAC (UPS mode)					
Input Max Voltage	300VAC					
Input/Output Frequency	50Hz / 60Hz					
Output Voltage	230VAC±5%					
Output Waveform	Pure Sine Wave					
Output Regulation	< 3% RMS for battery voltage range					
Output Short Circuit	Circuit Breaker					
Peak Efficiency	>95% (line mode) / 91% (inverter mode)					
Nominal DC Voltage	12V	12V (24V)	24V	48V		
Transfer Time	<10ms (UPS mode), <20ms (Appliance mode) **					
Charging Mode	3-stage					
Boost Volt (Flooded, AGM)	14.6, 14.1V	14.6, 14.1V (29.2, 28.2V)	29.2, 28.2V		58.4, 56.4V	
Float Volt	13.5V	13.5V (27V)	27.0V		54.0V	
AC Recharging Current	10/20amp	<b>60 amp</b>	20/30amp		<b>60 amp</b>	
No Load Consumption	<15W	<15W (<20W)	<20W		<50W	
Power Saving Consumption	<5W	<5W (<10W)	<10W		<15W	
Solar Charger						
Type, Max Charging Current	PWM, max 50 Amp					
System DC Voltage	12V	12V (24V)	24V		48V	
Max PV Input Voc	30V	40V (75V)	60V		90V	
Standby Power	1W	1W (2W)	2W			
ENVIRONMENTAL / MECHANICAL SPECIFICATIONS						
Certification	CE					
Operating/Storage Temp.	0°C ~ 55°C / -15°C~ 60°C					
Operating Humidity	20~90%RH Non-Condensing					
Dimension	316*240*95mm	355*272*100mm	355*272*100mm		468*295*120mm	
Net Weight	5.0Kg	6.8Kg	6.5Kg	7.0Kg	10Kg	10Kg

## KEY FEATURES

- High frequency pure sine wave design
- Multi-functional inverter-charger with programmable menus
- Inverter + 60A AC Charger + 50A Solar Charger
- Total system charging : 50A + 60A = 110A !!
- Adjustable Bulk/Float Volt and charging current
- Wide AC input range
- Lightweight, easy to install
- 2X surge capacity max 5s
- FREE monitoring software
- LCD Display + LED indicators
- Support main battery types e.g. Lead Acid, LiFePO4\*
- Built-in genset starter dry contact\*\*
- USB communication interface

Only 48V models are PARALLEL-READY. Optional Parallel Kit is required for all units in parallel and sold separately.

Note: Product specifications are subject to change without prior notice.

\*For LiFePo4 suitability, please check with your battery supplier on charging and BMS requirement.  
 \*\* Inverter-Generators are recommended for better compatibility