

GED150-12 12V150AH

GED SERIES-Deep Cycle GEL Battery



Specification

Nominal Voltage	12V	
Nominal Capacity(10HR)	150.0AH	
Dimension	Length	485±3mm (19.09 inches)
	Width	170±2mm (6.69 inches)
	Container Height	240±2mm (9.45 inches)
	Total Height (with Terminal)	240±2mm (9.45 inches)
Approx Weight	Approx 41.7 Kg (91.93 lbs)	
Terminal	T11	
Container Material	ABS	
Rated Capacity	161.4 AH/8.07A	(20hr, 1.80V/cell, 25°C/77°F)
	150.0 AH/15.0A	(10hr, 1.80V/cell, 25°C/77°F)
	133.5 AH/26.7A	(5hr, 1.75V/cell, 25°C/77°F)
	121.3 AH/40.4A	(3hr, 1.75V/cell, 25°C/77°F)
	97.2 AH/97.2A	(1hr, 1.60V/cell, 25°C/77°F)
Max. Discharge Current	1500A (5s)	
Internal Resistance	Approx 2.6mΩ	
Operating Temp. Range	Discharge	-15~50°C (5~122°F)
	Charge	0~40°C (32~104°F)
	Storage	-15~40°C (5~104°F)
Nominal Operating Temp. Range	25±3°C (77±5°F)	
Cycle Use	Initial Charging Current less than 45.0A.	Voltage
	14.4V~15.0V at 25°C(77°F)Temp. Coefficient -30mV/°C	
Standby Use	No limit on Initial Charging Current Voltage	
	13.5V~13.8V at 25°C(77°F)Temp. Coefficient -20mV/°C	
Capacity affected by Temperature	40°C (104 °F)	103%
	25°C (77 °F)	100%
	0°C (32 °F)	86%
Self Discharge	GED series batteries may be stored for up to 6 months at 25°C(77°F) and then a freshening charge is required. For higher temperatures the time interval will be shorter.	

Applications

- ◆ Solar energy
- ◆ UPS
- ◆ Telecommunication
- ◆ Golf trolleys and golf cart Portable
- ◆ apparatus, lights and instruments;
- ◆ Electric toys
- ◆ Illumination light
- ◆ Fire alarms
- ◆ Portable power
- ◆ Wheelchairs
- ◆ Medical equipments.
- ◆

ISO 9001	ISO 14001	OHSAS 18001	TLC
CE	RoHS	UL	Battery

Constant Current Discharge (Amperes) at 25 °C (77°F)

F.V/Time	10min	15min	20min	30min	45min	1h	2h	3h	4h	5h	6h	8h	10h	20h
1.85V/cell	223.2	186.9	164.1	119.8	94.3	76.6	48.8	37.4	30.5	24.9	21.3	18.4	16.3	8.03
1.80V/cell	282.5	225.5	192.4	139.5	109.6	85.7	52.6	39.9	33.1	26.4	23.4	19.5	17.6	8.14
1.75V/cell	310.6	245.7	207.9	144.4	114.2	89.4	54.2	41.3	34.5	27.0	24.6	20.3	18.1	8.52
1.70V/cell	338.7	262.8	217.2	150.7	117.4	92.6	56.7	43.2	33.5	27.7	26.3	20.9	19.4	8.77
1.65V/cell	364.3	278.9	231.3	158.8	120.6	95.8	58.4	44.5	36.3	28.9	27.9	21.8	19.9	9.08
1.60V/cell	394.0	298.7	246.8	167.1	125.7	98.3	60.7	45.6	37.3	29.4	28.3	22.5	20.5	9.47

Constant Power Discharge (Watts) at 25 °C (77°F)

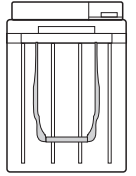
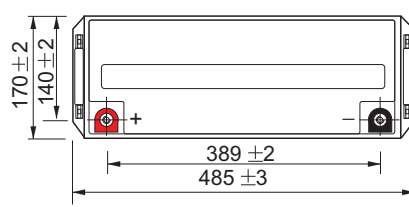
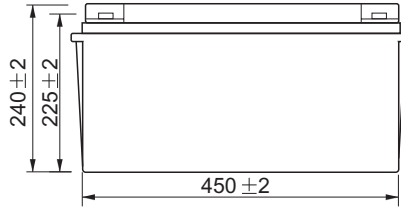
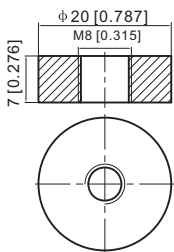
F.V/Time	10min	15min	20min	30min	45min	1h	2h	3h	4h	5h	6h	8h	10h	20h
1.85V/cell	411.7	350.6	309.1	225.7	180.5	146.9	93.1	73.7	59.3	48.6	43.3	35.3	29.3	16.3
1.80V/cell	518.6	416.6	360.3	262.6	208.1	163.2	99.0	77.4	64.1	52.7	45.6	36.9	30.1	16.9
1.75V/cell	562.3	450.2	384.7	270.4	214.8	169.6	102.9	78.5	64.2	53.5	46.8	37.8	30.8	17.2
1.70V/cell	604.8	477.6	401.6	280.9	223.2	174.8	107.3	79.9	65.9	54.7	47.5	39.4	31.5	17.8
1.65V/cell	648.2	504.5	424.5	294.1	227.3	179.9	110.6	84.7	66.8	56.3	48.9	40.8	32.2	18.3
1.60V/cell	692.4	532.9	447.6	308.6	234.7	185.2	113.5	86.4	69.7	57.4	49.5	41.4	32.9	18.8

Note The above data are average values, and can be obtained with 3 charge/discharge cycles. These are not minimum values.

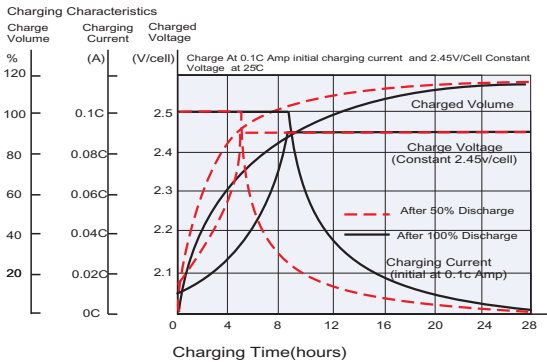
Dimensions

T11 Terminal

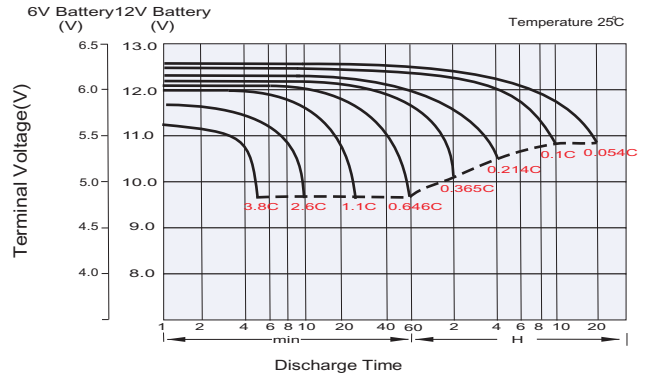
Unit: mm [inches]



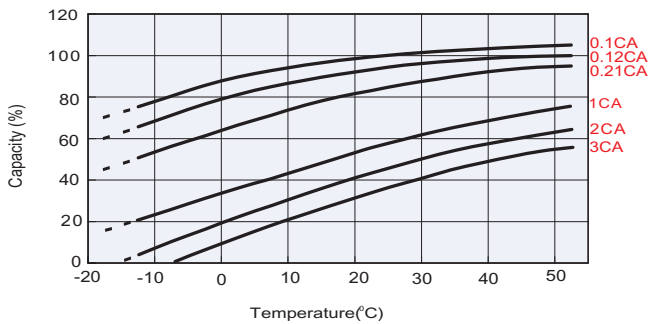
Charging Characteristics (cycle use)



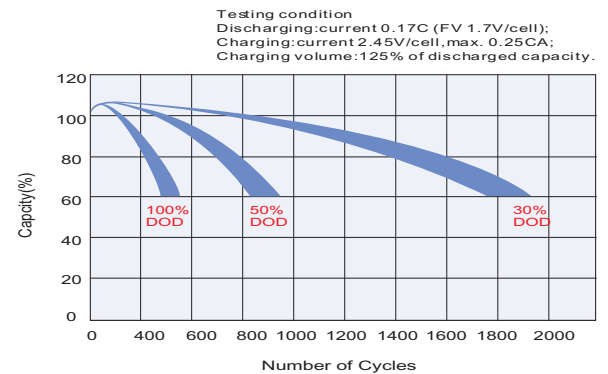
Discharge Characteristics



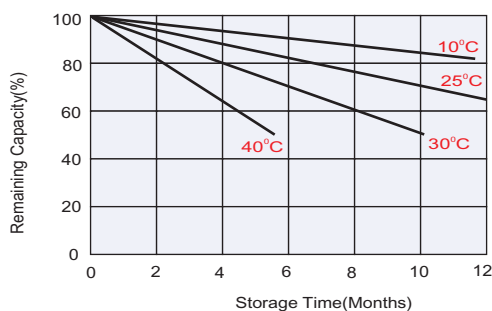
Temperature Effects in Relation to Battery Capacity



Cycle Life in Relation to Depth of Discharge



Self Discharge Characteristics



No supplementary charge required

(Carry out supplementary charge before use if 100% capacity is required.)

Supplementary charge required before use. Optional charging way as below:

1. Charged for above 3 days at limited current 0.25CA and constant voltage 2.25V/cell.
2. Charged for above 20 hours at limited current 0.25CA and constant voltage 2.45V/cell.
3. Charged for 8~10 hours at limited current 0.05CA.

Supplementary charge may often fail to recover the capacity.

The battery should never be left standing till this is reached.