



GD800-2 2V800AH GD SERIES-Deep Cycle Battery

Applications

- ◆ Electric tools
- ◆ Vehicle in place of walking
- ◆ Lawn mowers
- ◆ Golf trolleys and golf cart
- ◆ Portable apparatus, lights and instruments;
- ◆ Electric toys
- ◆ Illumination light
- ◆ Fire alarms
- ◆ Portable power
- ◆ Wheelchairs
- ◆ Solar energy systems
- ◆ Marine
- ◆ RV
- ◆ Medical equipments.

ISO 9001	ISO 14001	OHSAS 18001	
CE	RoHS		

Specification

Nominal Voltage	2V
Nominal Capacity(10HR)	800.0AH @10hr-rate to 1.80V per cell @25°C
Dimension	Length 410±3mm (16.14 inches)
	Width 175±3mm (6.89 inches)
	Container Height 330±3mm (12.99 inches)
	Total Height (with Terminal) 351±3mm (13.82 inches)
Approx Weight	Approx 45.1 kg (99.428 lbs)
Terminal	T11
Container Material	ABS
Max. Discharge Current	3200A (5s)
Internal Resistance	Approx 0.60mΩ
Operating Temp.Range	Discharge : -20~60°C (-4~ 140°F)
	Charge : 0~50°C (32~122°F)
	Storage : -20~60°C (-4~140°F)
Nominal Operating Temp. Range	25±5°C (77±41°F)
Float charging Voltage	2.27 to 2.3 VDC/unit Average at 25°C
Recommended Maximum Charging Current Limit	160 A
Equalization and Cycle Service	2.43 to 2.47 VDC/unit Average at 25°C
Capacity affected by Temperature	40°C (104°F) 103%
	25°C (77°F) 100%
	0°C (32°F) 86%
Self Discharge	JYC GD series battery may be stored for up to 6 months at 25°C(77°F) and then a freshening charge is required. For higher temperatures the time interval will be shorter.

Constant Current Discharge Characteristics: A (25°C)

F.V/Time	15MIN	30MIN	1HR	2HR	3HR	4HR	5HR	6HR	8HR	10HR
1.60V	1086	801.0	499.5	306.4	228.2	163.7	143.3	128.7	103.9	83.32
1.65V	1033	769.1	493.2	295.3	218.7	158.0	141.9	125.6	99.23	82.53
1.70V	963.1	725.0	483.6	290.5	213.9	156.6	139.9	122.5	97.68	81.74
1.75V	855.0	652.5	445.3	274.5	202.7	147.9	138.1	116.3	94.57	80.86
1.80V	736.0	594.3	419.7	261.7	194.7	146.5	135.7	114.7	93.02	80.11
1.85V	622.4	535.0	387.8	247.4	185.1	135.0	127.7	108.5	88.37	75.22

Constant Power Discharge Characteristics: W(25°C)

F.V/Time	15MIN	30MIN	1HR	2HR	3HR	4HR	5HR	6HR	8HR	10HR
1.60V	1902	1460	929.5	573.3	425.3	307.7	285.0	248.3	197.7	166.0
1.65V	1852	1452	924.6	565.1	417.0	303.1	282.3	245.1	196.0	164.4
1.70V	1749	1374	915.5	556.8	410.6	302.0	279.0	239.4	193.0	163.5
1.75V	1558	1238	858.7	527.1	395.9	286.8	275.0	227.6	186.9	161.8
1.80V	1349	1130	816.6	503.4	379.5	285.5	270.2	224.9	183.9	160.5
1.85V	1150	1019	757.5	476.5	361.5	264.4	255.0	213.1	174.7	151.2

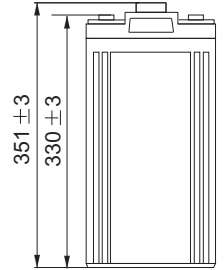
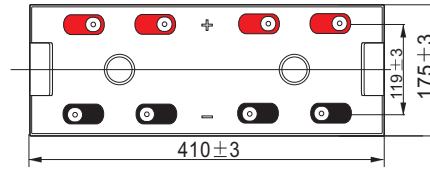
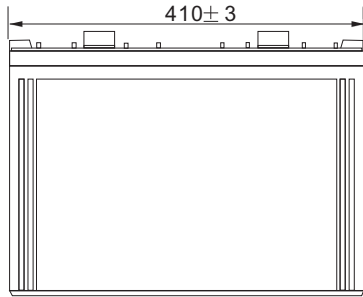
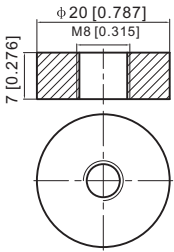
Note The above data are average values, and can be obtained with 3 charge/discharge cycles. These are not minimum values.



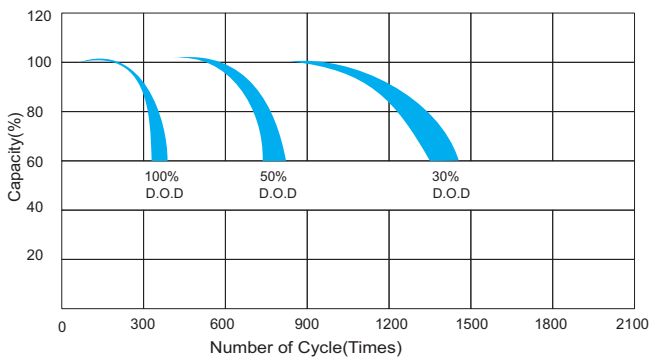
GD800-2 2V800AH GD SERIES-Deep Cycle Battery

Dimensions

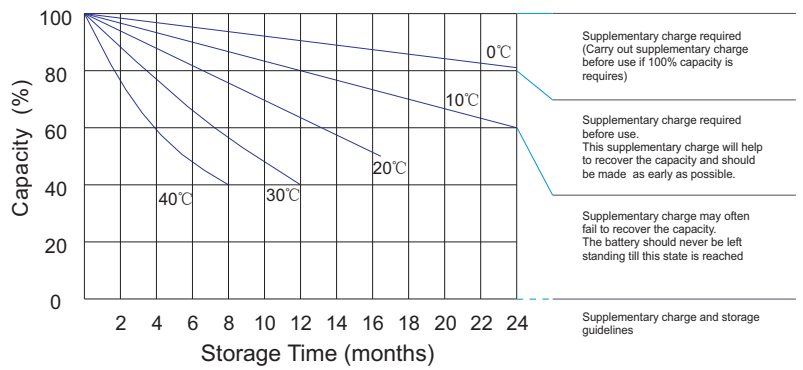
■ T11 Terminal
Unit: mm [inches]



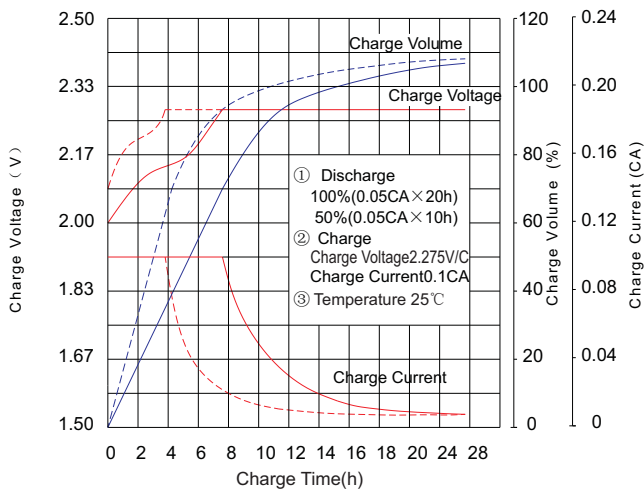
Life characteristics of cyclic use



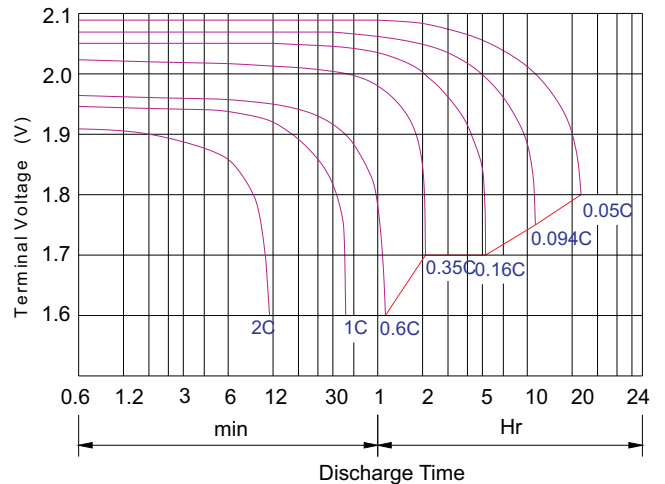
Storage characteristic



Charge characteristic Curve for standby use



Discharge characteristic Curve



JYC GD BATTERIES

This information is generally descriptive only and is not intended to make or imply any representation, guarantee or warranty with respect to any cells and batteries. Cell and battery designs/ specification are subject to modification without notice. Contact JYC for the latest information.