



GD600-2 2V600AH GD SERIES-Deep Cycle Battery

Applications

- ◆ Electric tools
- ◆ Vehicle in place of walking
- ◆ Lawn mowers
- ◆ Golf trolleys and golf cart
- ◆ Portable apparatus, lights and instruments;
- ◆ Electric toys
- ◆ Illumination light
- ◆ Fire alarms
- ◆ Portable power
- ◆ Wheelchairs
- ◆ Solar energy systems
- ◆ Marine
- ◆ RV
- ◆ Medical equipments.

ISO 9001	ISO 14001	OHSAS 18001	
CE	RoHS		

Specification

Nominal Voltage	2V	
Nominal Capacity(10HR)	600.0AH @10hr-rate to 1.80V per cell @25°C	
Dimension	Length	300±2mm (11.81 inches)
	Width	175±2mm (6.89 inches)
	Container Height	330±2mm (12.99 inches)
	Total Height (with Terminal)	350±2mm (13.78 inches)
Approx Weight	Approx 33.0 kg (72.753 lbs)	
Terminal	T11	
Container Material	ABS	
Max. Discharge Current	3000A (5s)	
Internal Resistance	Approx 0.62mΩ	
Operating Temp.Range	Discharge	-20~60°C (-4~ 140°F)
	Charge	0~50°C (32~122°F)
	Storage	-20~60°C (-4~140°F)
Nominal Operating Temp. Range	25±5°C (77±41°F)	
Float charging Voltage	2.27 to 2.3 VDC/unit Average at 25°C	
Recommended Maximum Charging Current Limit	120 A	
Equalization and Cycle Service	2.43 to 2.47 VDC/unit Average at 25°C	
Capacity affected by Temperature	40°C (104°F)	103%
	25°C (77°F)	100%
	0°C (32°F)	86%
Self Discharge	JYC GD series battery may be stored for up to 6 months at 25°C(77°F) and then a freshening charge is required. For higher temperatures the time interval will be shorter.	

Constant Current Discharge Characteristics: A (25°C)

F.V/Time	15MIN	30MIN	1HR	2HR	3HR	4HR	5HR	6HR	8HR	10HR
1.60V	814.6	600.8	374.6	229.8	171.2	122.8	107.5	96.51	77.91	62.49
1.65V	774.6	576.8	369.9	221.4	164.0	118.5	106.4	94.19	74.42	61.90
1.70V	722.3	543.8	362.7	217.9	160.4	117.4	104.9	91.86	73.26	61.30
1.75V	641.3	489.4	334.0	205.9	152.0	111.0	103.5	87.21	70.93	60.65
1.80V	552.0	445.7	314.8	196.3	146.0	109.9	101.7	86.05	69.77	60.08
1.85V	466.8	401.3	290.9	185.5	138.9	101.3	95.76	81.40	66.28	56.41

Constant Power Discharge Characteristics: W(25°C)

F.V/Time	15MIN	30MIN	1HR	2HR	3HR	4HR	5HR	6HR	8HR	10HR
1.60V	1426	1095	697.1	430.0	319.0	230.8	213.7	186.2	148.3	124.5
1.65V	1389	1089	693.5	423.8	312.7	227.4	211.7	183.8	147.0	123.3
1.70V	1312	1031	686.6	417.6	308.0	226.5	209.2	179.6	144.7	122.6
1.75V	1169	928.8	644.0	395.3	296.9	215.1	206.3	170.7	140.2	121.4
1.80V	1011	847.4	612.4	377.5	284.6	214.1	202.7	168.7	137.9	120.4
1.85V	862.6	764.0	568.1	357.4	271.2	198.3	191.2	159.8	131.1	113.4

Note The above data are average values, and can be obtained with 3 charge/discharge cycles. These are not minimum values.

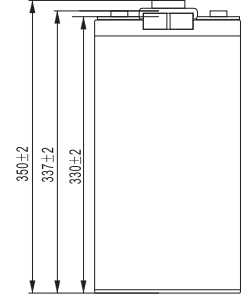
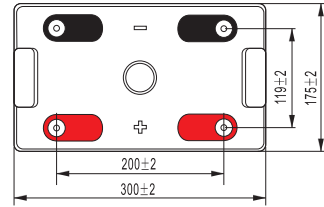
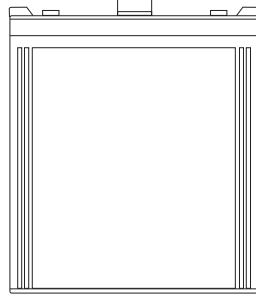
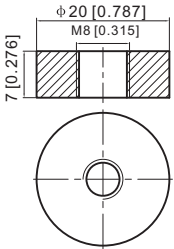


GD600-2 2V600AH GD SERIES-Deep Cycle Battery

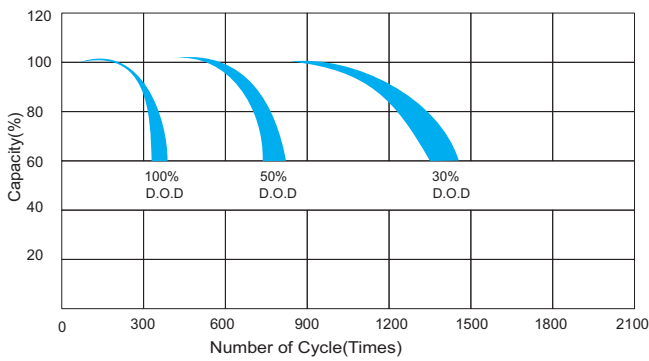
Dimensions

T11 Terminal

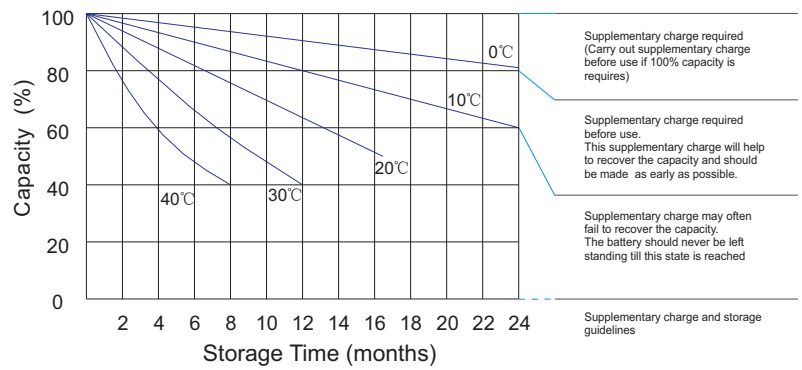
Unit: mm [inches]



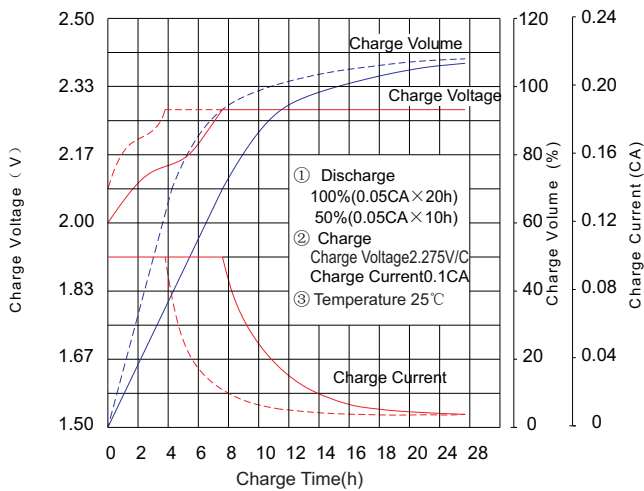
Life characteristics of cyclic use



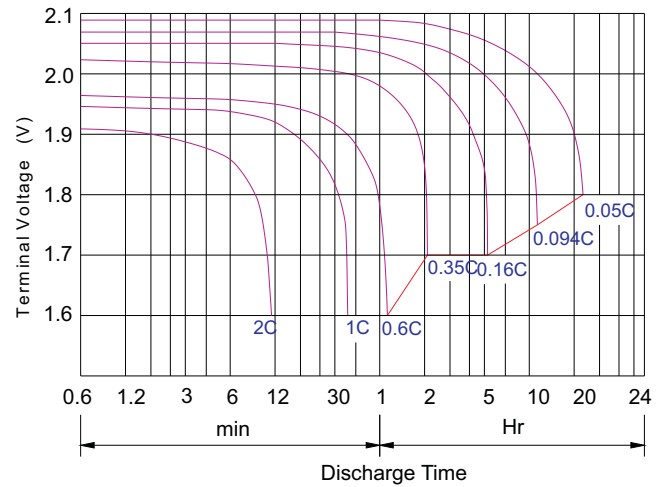
Storage characteristic



Charge characteristic Curve for standby use



Discharge characteristic Curve



JYC GD BATTERIES

This information is generally descriptive only and is not intended to make or imply any representation, guarantee or warranty with respect to any cells and batteries. Cell and battery designs/ specification are subject to modification without notice. Contact JYC for the latest information.